



SHREE L. R. TIWARI COLLEGE OF ENGINEERING

Approved by AICTE & DTE, Maharashtra State & Affiliated to University of Mumbai, NAAC Accredited, NBA Accredited program, ISO 9001:2015 Certified | DTE Code No: 3423, Recognized under Section 2(f) of the UGC Act 1956, Minority Status (Hindi Linguistic)

Key Indicator- 2.5. Evaluation Process and Reforms

Metric No. 2.5.1. - Mechanism of internal/ external assessment is transparent and the grievance redressal system is time- bound and efficient

1. Transparency in Internal Assessment:

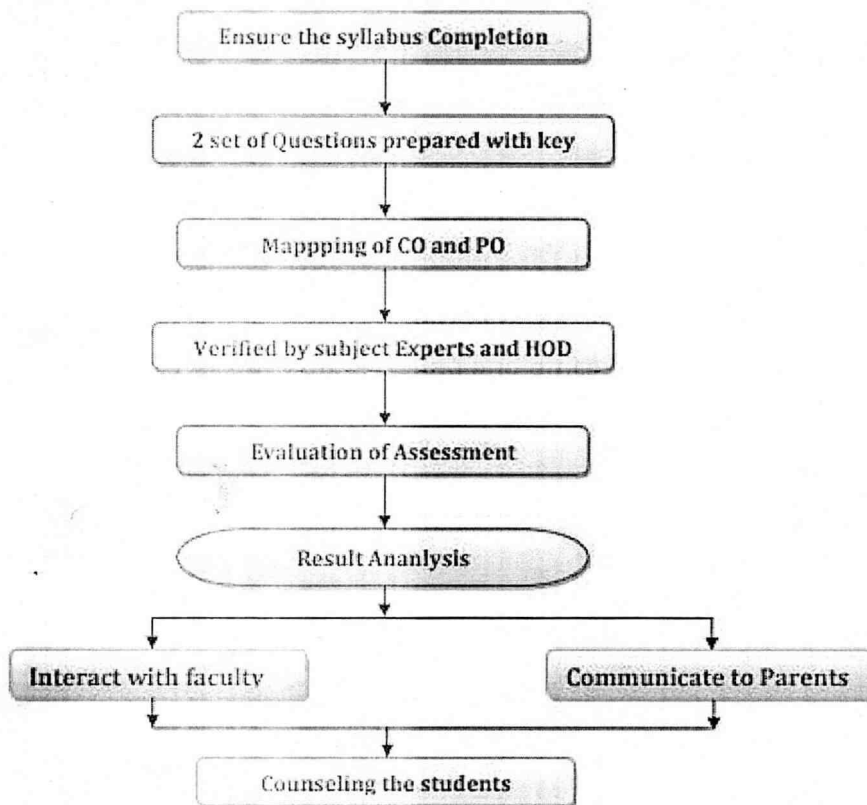


Fig 1 Internal Assessment


PRINCIPAL

Shree L. R. Tiwari College of Engineering
Mira Road (E).

